
About Arm Flexible Access

Arm Flexible Access provides up-front, zero or low cost access to a wide range of Arm IP, tools, and training. Experiment and design with the entire portfolio—license fees are only due at the point of manufacture and calculated only on the IP included in the final SoC design.

The Standard and Entry Tiers of Flexible Access include an extensive range of Arm IP and dedicated support, training, and development tools.

The DesignStart Tier offers \$0 access to physical IP and a select mix of Arm IP, forum support, access to online training materials and development tools.

Flexible Access includes free use of thousands of Arm Artisan Physical IP libraries for implementing silicon for manufacture across the broadest range of foundries and process technology nodes.

For more information, visit <https://www.arm.com/products/flexible-access>.

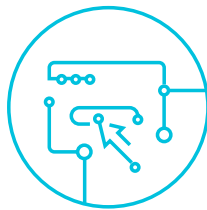
Early-stage startups can benefit from the Arm Flexible Access for Startups program, giving free access to the Entry Tier of Flexible Access. For more information visit <https://www.arm.com/products/flexible-access/startup>.

How does Arm Flexible Access work?



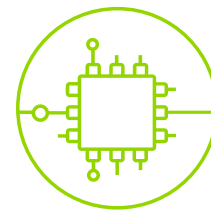
Access

- Widest range of Arm IP, tools and services
- Annual access fee covers design rights
- Any or all of the IP package is downloadable at any time



Design

- Freedom to start, change or stop projects as needed
- Model your workload across included IP for best-fit design
- World-wide access to Arm training and support



Manufacture

- Licensing payment only for IP used at tape out, not before
- Transparent and simple business terms

How much does Arm Flexible Access cost?

Tiers	DesignStart	Entry	Standard
Access fees	\$0	\$75k per annum \$0 for startups*	\$200k per annum
License fees (due on project manufacture)	Calculated per design based on IP used. **		
Royalty	Calculated per project and paid per unit shipped **		

*Qualifying startups with <\$5M funding, <\$1M annual revenue, privately held

**Thousands of Arm Artisan Physical IP libraries are free of charge

What is included in Arm Flexible Access?

Tier		DesignStart	Entry	Standard
Product included		Select mix of CPUs & System IP Free Artisan Physical IP Library Program	Extensive CPUs, GPUs, Corstone foundation IP, system IP, security IP and safety packages Free Artisan Physical IP Library Program	
Number of tape-outs per year	Processor & system IP	1	1	Unlimited
	Physical IP	Unlimited		
Technical support from Arm expert engineers	Processor & system IP	Forum support. Paid support option available	Included	
	Physical IP	Support for Free Library Program physical IP excluded		
Evaluation, exploration and full design rights		Included		
Number of on demand online training seats for introductory training on a selection of included products		2 seats (only for CPUs included in this tier)	5 seats	25 seats
Tools and Models For details of what is included in each Success Kit and how they can help you build better products, reduce risk and accelerate time to market click here		1 Hardware Success Kit Eval (90 days)	1 Hardware Success Kit 3 Software Success Kits	3 Hardware Success Kits 9 Software Success Kits
Arm service tokens (can be used for training, design review or onsite support)		Purchased separately	Purchased separately	15 Service Tokens (equivalent to \$30k in value) for quick and flexible access to help, when you need it. Can be used for 3 days of onsite training or put toward a design review from Arm's expert engineering team.

Standard and Entry Tiers

Product	Description	Learn more about this product
Cortex Processors		
Cortex-A53 Processor	Low-power processor with 32-bit and 64-bit capabilities, applicable in a range of devices requiring high performance in power-constrained environments. <i>Reference design & supporting system IP available in Corstone-700. Subsystem requires minor modifications to integrate this processor.</i>	https://www.arm.com/products/silicon-ip-cpu/cortex-a/cortex-a53
Cortex-A35 Processor	Ultra-high efficiency smart device processor, the smallest and most power-efficient 32-bit and 64-bit Arm application processor. <i>Reference design & supporting system IP available in Corstone-700. Subsystem requires minor modifications to integrate this processor.</i>	https://www.arm.com/products/silicon-ip-cpu/cortex-a/cortex-a35
Cortex-A34 Processor	Low-power 64-bit only processor with ultra-high efficiency. <i>Reference design & supporting system IP available in Corstone-700. Subsystem requires minor modifications to integrate this processor.</i>	https://www.arm.com/products/silicon-ip-cpu/cortex-a/cortex-a34
Cortex-A32 Processor	Low-power 32-bit only processor with ultra-high efficiency. <i>Reference design & supporting system IP available in Corstone-700.</i>	https://www.arm.com/products/silicon-ip-cpu/cortex-a/cortex-a32
Cortex-A7 Processor	Power-efficient processor, designed for a wide range of devices with differing requirements demanding balance between power and performance.	https://www.arm.com/products/silicon-ip-cpu/cortex-a/cortex-a7
Cortex-A5 Multi-Processor	Smallest Cortex-A processor designed for applications that require virtual memory management for high-level operating systems within a low-power, low-area profile. <i>Reference design & supporting system IP available in Corstone-500</i>	https://www.arm.com/products/silicon-ip-cpu/cortex-a/cortex-a5
Cortex-A5 Uni-Processor		https://www.arm.com/products/silicon-ip-cpu/cortex-a/cortex-a5
Cortex-R52 Processor	Designed for advanced silicon processes requiring high-performance and cost-effective processing. Delivers real-time performance for functional safety.	https://www.arm.com/products/silicon-ip-cpu/cortex-r/cortex-r52
Cortex-R8 Processor	Designed for products with high performance requirements where timing deadlines must always be met.	https://www.arm.com/products/silicon-ip-cpu/cortex-r/cortex-r8
Cortex-R5 Processor	Offers high-performance computing solutions for embedded systems that require reliability, high availability, fault tolerance, and real-time responses.	https://www.arm.com/products/silicon-ip-cpu/cortex-r/cortex-r5
Cortex-M55 Processor	First Cortex-M processor to integrate Helium vector processing technology. It brings a significant uplift in DSP and ML performance, while meeting the efficiency requirements of constrained endpoint use-cases.	https://www.arm.com/products/silicon-ip-cpu/cortex-m/cortex-m55
Cortex-M7 Processor	The highest performance CPU in the energy-efficient Cortex-M processor family and includes digital signal processing (DSP) instructions.	https://www.arm.com/products/silicon-ip-cpu/cortex-m/cortex-m7
Cortex-M33 Processor	Optimized for cost and power-sensitive microcontroller and mixed-signal applications. Designed for applications requiring efficient security or digital signal control. New Arm Custom Instructions allow optimization for specific workloads. <i>Reference design & supporting system IP available in Corstone-201.</i>	https://www.arm.com/products/silicon-ip-cpu/cortex-m/cortex-m33
Cortex-M4 Processor	Designed to address applications requiring digital signal processing, with a blend of efficient, easy-to-use control and signal processing capabilities. <i>Supporting system IP available in Corstone-101.</i>	https://www.arm.com/products/silicon-ip-cpu/cortex-m/cortex-m4
Cortex-M3 Processor	Designed for cost-sensitive and power-constrained solutions in a broad range of devices. Balanced between area, performance, and power. <i>Reference design & supporting system IP available in Corstone-101.</i>	https://www.arm.com/products/silicon-ip-cpu/cortex-m/cortex-m3
Cortex-M23 Processor	Smallest and lowest-power microcontroller with Arm TrustZone security, ideal for applications requiring software isolation and security. <i>Reference design & supporting system IP available in Corstone-102.</i>	https://www.arm.com/products/silicon-ip-cpu/cortex-m/cortex-m23

Cortex-M0+ Processor	The smallest footprint and lowest power requirements of all Cortex-M processors, suitable for a wide variety of applications, including sensors and wearables. <i>Reference design & supporting system IP available in Corstone-101.</i>	https://www.arm.com/products/silicon-ip-cpu/cortex-m/cortex-m0-plus
Cortex-M0 Processor	Small footprint and high efficiency, ideal for simple, cost-sensitive devices. <i>Reference design & supporting system IP available in Corstone-101.</i>	https://www.arm.com/products/silicon-ip-cpu/cortex-m/cortex-m0

Ethos Machine Learning Processors

Ethos-U55	Ethos-U55 is a first generation uNPU for accelerating neural networks. It is targeted at the embedded market and works alongside Cortex-M processors. Ethos-U55 hits multiple performance points with 4 different possible configurations and hence can target a wide variety of applications like smart home appliances, DTV, smart speakers etc.	https://www.arm.com/products/silicon-ip-cpu/ethos/ethos-u55
Ethos-U65	Ethos-U65 enables new AI capabilities into edge and endpoint devices in applications including high resolution smart cameras, smart home solutions, voice assistants, drones, and wearables with 2x the performance over Ethos-U55, and achieving 1TOPs using our microNPU architecture. Ethos-U65 is designed for use with DRAM based systems, which leads to higher bandwidth availability. This allows Ethos-U65 to be used with all classes of embedded systems: higher performance Cortex-A based SoCs or low power Cortex-M based SoCs for battery powered devices (with or without DRAM)	https://developer.arm.com/ip-products/processors/machine-learning/arm-ethos-u/ethos-u65

Corstone IP

Cortex processor reference packages and supporting system IP. Simplifies silicon design and reduces time to market.

Corstone-1000	Corstone-1000 is a reference package that integrates Cortex-A and Cortex-M processors. It is meant to help efficiently build a secure and efficient 64-bit Linux-capable IoT System-on-Chip (SoC), targeting applications such as endpoints, gateways, embedded applications. Its system architecture combines a choice of the Cortex-A53, Cortex-A35 or Cortex-A32 processor with up to two Cortex-M based systems. It includes a verified subsystem with advanced power management, authenticated debug, a stand-alone Secure Enclave for PSA hardware root of trust, and a dedicated firewall IP for enhanced security. All required system IP and a reference software stack are included, enabling rendering and further modifications of the design. Cryptographic accelerator provided as an option.	Please contact your account manager for further details.
Corstone-700	Corstone-700 is a reference package that integrates Cortex-A and Cortex-M processors. It is built for high performance IoT endpoints, gateways, and embedded applications. It includes a verified subsystem based on Cortex-A32 with support for up to two Cortex-M system expansion, advanced power management, authenticated debug, a Cortex-M0+ based Secure Enclave for hardware root of trust, a dedicated firewall IP for enhanced security. All required system IP are included, enabling rendering and further modifications of the design. Cryptographic accelerator is not included.	https://www.arm.com/products/iot/soc/corstone-700
Corstone-500	Corstone-500 offers a pre-integrated reference package along with an extensive set of System IP, for building Linux-capable high performance System on Chips based on the Cortex-A5 CPU. Corstone-500 includes an FPGA image, out-of-box Linux support and a simulation model, thus accelerating time-to-market and reducing development risk.	https://www.arm.com/products/iot/soc/corstone-500

Corstone-300	Arm Corstone-300 is a reference package and system IP package providing a starting point for signal processing and machine learning applications. It is designed around the Arm Cortex-M55 processor, and demonstrates system-wide TrustZone over AMBA AXI and integrated power management. The IP, along with FPGA and FVP platforms, and open-source software such as TF-M, gives a both a head start and reduces risk in SoC development.	https://www.arm.com/products/iot/soc/corstone-300
Corstone-201	Reference package and system IP for building a secure system on chip with the Cortex-M33 processor. The Corstone-201 contains various system IP components and a reference design subsystem integrating the processor, memory, debug, security and power control. It is designed for the mainstream market targeting performance balanced with power efficiency.	https://www.arm.com/products/iot/soc/corstone-201
Corstone-102	The Arm Corstone-102 provides a flexible reference package and system IP for small, low cost and energy efficient SoC development. Based on the Arm Cortex-M23 processor, the Corstone-102 is targeted at the constrained market segment for secure IoT applications.	https://www.arm.com/products/iot/soc/corstone-102
Corstone-101	The Arm Corstone-101 contains a reference package based on the Cortex-M3, as well as various other system IP components. It provides all of the fundamental system elements to design a SoC around Arm Cortex-M0/Cortex-M0+/Cortex-M3/Cortex-M4 processors.	https://www.arm.com/products/iot/soc/corstone-101

Mali Multimedia Processing

Mali-G52 Graphics Processor	Designed to bring premium visual experiences to mainstream markets with heightened machine learning capabilities.	https://www.arm.com/products/silicon-ip-multimedia/gpu/mali-g52
Mali-G31 Graphics Processor	The first ultra-efficient GPU based on the Bifrost architecture targeting smaller applications such as IoT.	https://www.arm.com/products/silicon-ip-multimedia/gpu/mali-g31
Mali-C32 Image Signal Processor	High precision and high dynamic range image signal processor. Optimized for area. Ideal for low-power, cost-sensitive embedded vision devices.	https://www.arm.com/products/silicon-ip-multimedia/image-signal-processor/mali-c32
Mali-C52 Image Signal Processor	State-of-the-art image signal processing with class-leading high dynamic range image quality in real-time. Can be optimized for performance or area.	https://www.arm.com/products/silicon-ip-multimedia/image-signal-processor/mali-c52
Mali Arm Frame Buffer Compression (AFBC)	Ready to be integrated with non-Arm multimedia IP blocks to bring the advantages of Arm Frame Buffer Compression (AFBC) across the SoC. AFBC minimizes multimedia system bandwidth requirements, significantly reducing SoC power consumption.	https://www.arm.com/why-arm/technologies/graphics-technologies/arm-frame-buffer-compression

CoreLink Interconnect

CoreLink CCI-550 Cache Coherent Interconnect	Full coherency with up to six clusters including big.LITTLE and coherent accelerators. High performance and power efficiency with integrated snoop filter.	https://www.arm.com/products/silicon-ip-system/corelink-interconnect/cci-550
CoreLink CCI-500 Cache Coherent Interconnect	Full coherency with up to four clusters including big.LITTLE and coherent accelerators. High performance and power efficiency with integrated snoop filter.	https://www.arm.com/products/silicon-ip-system/corelink-interconnect/cci-500
CoreLink CCI-400 Cache Coherent Interconnect with CPE-425	Provides full cache coherency between two clusters of multi-core CPUs. Enables big.LITTLE processing and I/O coherency for devices.	https://www.arm.com/products/silicon-ip-system/corelink-interconnect/cci-400
CoreLink NIC-450 Network Interconnect	Highly configurable topology with network-on-chip properties for building high-performance, optimized, AMBA-compliant SoC connectivity, including QoS and Thin links.	https://www.arm.com/products/silicon-ip-system/corelink-interconnect/nic
CoreLink NIC-400 Network Interconnect	Highly configurable topology with network-on-chip properties for building high-performance, optimized, AMBA-compliant SoC connectivity.	https://www.arm.com/products/silicon-ip-system/corelink-interconnect/nic

CoreLink DPE-400 Data Parity Extn	Licensable extension of CoreLink NIC-400 Network Interconnect, DPE-400 provides transportation of read and write data payload parity information, using the AXI WUSER and RUSER, and AHB HWUSER and HRUSER, signals.	https://developer.arm.com/documentation/100591/0100/dpe-400-overview
CoreLink ADB-400 AMBA Domain Bridge	An asynchronous bridge between two components or systems that can be in a different power, clock, or voltage domains.	https://developer.arm.com/ip-products/system-ip/corelink-interconnect/corelink-network-interconnect-family
CoreLink PCK-600 Power Control Kit	Power Control Kit with a suite of system IP to ease system power and clock management infrastructure integration.	https://www.arm.com/products/silicon-ip-system/system-controllers/pck-600
CoreLink XHB-400 AXI4-AHB Bridge	Converts AXI4 protocol to AHB-Lite protocol via an AXI4 slave interface and an AHB-Lite master interface.	https://developer.arm.com/ip-products/system-ip/corelink-interconnect/corelink-network-interconnect-family
CoreLink XHB-500	XHB-500 provides an AMBA AXI5 to AHB5 bridge and an AHB5 to AXI5 bridge.	https://developer.arm.com/docs/101375/latest/introduction/about-the-xhb-500-bridges
CoreLink SIE-300	Provides a set of configurable AXI5 security-aware components that can protect peripherals and memories that are unaware of security, so that a peripheral or memory is only accessible to trusted software. The SIE-300 also provides clock synchronizing bridges and an access control gate.	https://developer.arm.com/ip-products/system-ip/corelink-interconnect/corelink-sie-300

CoreLink System Controllers

CoreLink AHB Cache	AHB Cache can be implemented as a processor cache (data or generic), or a system cache. It can be used for both code and data. The cache provides AHB5 data interfaces and an APB configuration interface, both with TrustZone for Armv8-M support.	https://developer.arm.com/ip-products/system-ip/system-controllers/cache-controllers
CoreLink SIE-200 AHB System IP	The CoreLink SIE-200 system IP includes a collection of interconnect, peripheral, and TrustZone controller components to help build secure AHB systems more easily.	https://developer.arm.com/ip-products/system-ip/corelink-interconnect/corelink-sie-200
CoreLink DMA-350	CoreLink DMA-350 is an AXI DMA controller targeted at endpoint AI systems, particularly those based on the Cortex-M55 processor. It has been designed to enable efficient data movement, thereby reducing system power consumption and improving performance.	Link not yet available
CoreLink DMA-330 AXI DMA Controller	A high-performance DMA controller that can boost the performance and reduce the power consumption in AXI-based systems.	https://www.arm.com/products/silicon-ip-system/embedded-system-design/dma-330
CoreLink DMA-230 AHB Micro DMA Controller	Low gate count (3-10k gates) micro-DMA engine targeting AHB-based Cortex-M systems.	https://www.arm.com/products/silicon-ip-system/embedded-system-design/dma-230
CoreLink GIC-500 Generic Interrupt Controller	Detects, manages, virtualizes, and distributes interrupts for Armv8.0-A processors. Configurable up to 128 single-threaded cores and 960 shared interrupts.	https://www.arm.com/products/silicon-ip-system/system-controllers/gic
CoreLink GIC-400 Generic Interrupt Controller	Detects, manages, and virtualizes interrupts for Armv7 processors. Configurable up to 8 cores and 480 shared interrupts.	https://www.arm.com/products/silicon-ip-system/system-controllers/gic
PL192 Vectored Interrupt Controller	An advanced vectored interrupt controller supporting up to 32 vectored interrupts with programmable priority level and masking.	https://developer.arm.com/ip-products/system-ip/system-controllers/peripheral-controllers
CoreLink TZC-400 TrustZone Address Space Controller	Performs security checks on transactions to memory or peripherals, configurable up to 8 regions.	https://www.arm.com/products/silicon-ip-security/address-space-controllers
CoreLink L2C-310 AXI Level 2 Cache Controller	High-performance, AXI level 2 cache controller designed and optimized to address Arm AXI processors, normally used with Cortex-A5.	https://www.arm.com/products/silicon-ip-system/embedded-system-design/l2c-310

CoreLink MMU-500 System Memory Management Unit	System memory management unit that includes caching and memory virtualization. Enforces memory protection and access control, and is designed for use in a virtualized system where multiple guest operating systems are managed by a hypervisor. Supports Armv8-A and Armv7-A.	https://www.arm.com/products/silicon-ip-system/system-controllers/mmu
BP140 AXI Internal Memory Interface	AXI to on-chip SRAM interface.	https://developer.arm.com/docs/dto0009/a
BP141 TrustZone AXI Memory Interface	AXI to on-chip SRAM interface with support for Arm TrustZone protection for secure memory regions.	https://developer.arm.com/products/system-ip/system-controllers/other-system-controllers

Peripheral Controllers

PL011 UART Universal Asynchronous Receiver/Transmitter	Peripheral controllers for UART, SPI and real-time clock.	https://developer.arm.com/ip-products/system-ip/system-controllers
PL022 SPI Synchronous Serial Port		https://developer.arm.com/ip-products/system-ip/system-controllers
PL031 RTC Real Time Clock		https://developer.arm.com/ip-products/system-ip/system-controllers

CoreSight Debug & Trace

CoreSight SoC-600 Debug and Trace	For high-bandwidth debug and trace solutions. Includes remote and local debug access, trace routing and termination, cross-triggering and time stamping.	https://www.arm.com/products/silicon-ip-system/coresight-debug-trace/soc-600
CoreSight SoC-600M Debug and Trace	Debug and trace components for multi-core Cortex-M based SoCs. Includes remote and local debug access, trace routing and termination, cross-triggering and time stamping.	https://www.arm.com/products/silicon-ip-system/coresight-debug-trace/soc-600M
CoreSight SoC-400 Debug and Trace	Configurable components, including debug access trace generation manipulation and output, cross triggering, and time stamping.	https://www.arm.com/products/silicon-ip-system/coresight-debug-trace/soc-400
CoreSight SDC-600 Secure Debug Channel	Addresses device security needs by allowing silicon and tool vendors to enforce protection and police debug access, and by working closely with cryptographic elements and debug certificate authentication.	https://www.arm.com/products/silicon-ip-system/coresight-debug-trace/sdc-600
CoreSight SDC-600	Addresses device security needs by allowing silicon and tool vendors to enforce protection and police debug access, and by working closely with cryptographic elements and debug certificate authentication.	https://www.arm.com/products/silicon-ip-system/coresight-debug-trace/sdc-600
CoreSight ELA-600 Emb Logic Analyzer	Embedded Logic Analyzer with highest data tracing efficiency and capacity. Improves system efficiency with run-time signal monitoring and control.	https://www.arm.com/products/silicon-ip-system/coresight-debug-trace/coresight-ela-600
CoreSight ELA-500 Emb Logic Analyzer	Embedded Logic Analyzer providing an effective way to observe low-level signals in an SoC, offering a way to zoom into the root cause of data corruption.	https://www.arm.com/products/silicon-ip-system/coresight-debug-trace/coresight-ela-500
CoreSight STM-500 System Trace Macrocell	Trace source for real-time software instrumentation with no impact on system behavior or performance. Extends the low-cost, real-time visibility of software and hardware execution to all software developers. Supports 64-bit memory interfaces.	https://www.arm.com/products/silicon-ip-system/coresight-debug-trace/coresight-stm-500
CoreSight System Trace Macrocell	System Trace Macrocell supporting 32-bit memory interfaces.	https://developer.arm.com/ip-products/system-ip/coresight-debug-and-trace/coresight-components/system-trace-macrocell
CoreSight Trace Memory Controller	A configurable trace component to terminate trace buses into buffers, FIFOs, or alternatively, to route trace data over AXI to memory or off-chip to interface controllers.	https://www.arm.com/products/silicon-ip-system/coresight-debug-trace/coresight-tmc

Certified Libraries and FuSa RTS

FuSa RTS	With FuSa RTS, developers receive a robust real-time operating system (RTOS), independent processor abstraction layer (CMSIS-Core) and verified C library that are highly optimized for Cortex-M processors by Arm architecture experts.	https://developer.arm.com/tools-and-software/embedded/fusa-run-time-system
Certified C Library	<p>Subset of the standard C library comprising of approximately 200 functions that have been specifically implemented and optimized for use in safety development.</p> <p>Qualified for IEC 61508 (Industrial) – SIL 3 ISO 26262 (Automotive) – ASIL D, EN 50128 (Railways) – SIL 4 IEC 62304 (Medical) – Class C. Comes with its own Qualification Kit which comprises of the Safety Manual and Defect Report.</p>	https://developer.arm.com/tools-and-software/embedded/arm-compiler/safety

Artisan Physical IP

Cortex-M33 PIK for TSMC 22ULL	Reference flow offering a low-risk path to implementation of the Cortex-M33 with Artisan Physical IP on TSMC 22ULL process node.	
Cortex-M55 PIK for TSMC 22ULL	Reference flow offering a low-risk path to implementation of the Cortex-M55 with Artisan Physical IP on TSMC 22ULL process node.	https://www.arm.com/products/silicon-ip-physical
Ethos-U55 PIK for TSMC 22ULL	Reference flow offering a low-risk path to implementation of the Ethos-U55 with Artisan Physical IP on TSMC 22ULL process node.	
Artisan Memory Compilers TSMC 22ULL Artisan SC7MC Logic Libraries TSMC 22ULL Artisan SC6MC Logic Libraries TSMC 22ULL Artisan SC9 ThGO Logic Libraries TSMC 22ULL Artisan GPIO TSMC 22ULL Artisan Documentation TSMC 22ULL	Physical IP solution for TSMC 22ULL, including memory compilers, logic libraries, GPIOs and documentation.	

Artisan Physical IP – Free Library Program

For details of the thousands of Physical IP libraries included in the Artisan Physical IP - Free Library Program see <https://www.arm.com/products/silicon-ip-physical>

	5 nm	7 nm	12 nm	14 nm	22 nm	28 nm	40 nm	45 nm	55 nm	65 nm	80 nm	90 nm	110 nm	130 nm	150 nm	152 nm	160 nm	180 nm	250 nm	
TSMC						•	•		•	•	•	•	•	•	•	•	•	•	•	•
Samsung	•	•		•		•		•		•										
Global Foundries			•	•		•	•	•	•	•		•	•	•					•	•
UMC					•	•	•		•	•	•	•		•	•				•	•
SMIC						•	•			•		•	•	•	•				•	
XMC									•											
SK hynix												•								
Silterra													•	•	•				•	
HHGrace													•	•					•	
DB HiTek													•	•					•	
Vanguard													•						•	•
MagnaChip														•					•	
CSMC														•						
TowerJazz														•					•	
HeJian																	•		•	
1 st Silicon																			•	•
HHNEC																			•	

Safety Packages

Cortex-A53 Safety Package	<p>Safety Packages provide information used by chip developers when creating SoCs for functional safety applications and for easing the process of obtaining safety certification. They contain documentation specific for an individual processor.</p> <p>Cortex-R52, Cortex-R5, Cortex-M33, Cortex-M4, Cortex-M3, and Cortex-M0+ Safety Packages also provide access to their respective Software Test Library (STLs) to enable integration of the library.</p>	<p>https://www.arm.com/why-arm/technologies/safety</p>
Cortex-R52 Safety Package		
Cortex-R5 Safety Package		
Cortex-M33 Safety Package		
Cortex-M23 Safety Package		
Cortex-M7 Safety Package		
Cortex-M55 Safety Package		
Cortex-M4 Safety Package		
Cortex-M3 Safety Package		
Cortex-M0+ Safety Package		

Training

Arm On-Demand Online Training	<p>Arm on-demand training provides access to a wealth of training content, speeding up silicon development and providing the knowledge you need, when and where you need it. Topics including Arm CPU Architectures, AMBA bus protocols and Arm tools and models are delivered via over 500 bite sized videos and accompanying knowledge checks.</p> <p>Transcripts for online training are available in Korean, Simplified and Traditional Chinese and Japanese. Contact your account manager for access.</p>	<p>www.arm.com/support/training</p>
-------------------------------	--	---

DesignStart Tier

Product	Description	Learn more about this product
Cortex Processors		
Cortex-A5 Multi-processor	Smallest Cortex-A processor designed for applications that require virtual memory management for high-level operating systems within a low-power, low-area profile. <i>Reference design & supporting system IP available in Corstone-500</i>	https://www.arm.com/products/silicon-ip-cpu/cortex-a/cortex-a5
Cortex-M3 Processor	Designed for cost-sensitive and power-constrained solutions in a broad range of devices. Balanced between area, performance, and power. <i>Reference design & supporting system IP available in Corstone-101.</i>	https://www.arm.com/products/silicon-ip-cpu/cortex-m/cortex-m3
Cortex-M23 Processor	Smallest and lowest-power microcontroller with Arm TrustZone security, ideal for applications requiring software isolation and security. <i>Reference design & supporting system IP available in Corstone-102.</i>	https://www.arm.com/products/silicon-ip-cpu/cortex-m/cortex-m23
Cortex-M0 Processor	Small footprint and high efficiency, ideal for simple, cost-sensitive devices. <i>Reference design & supporting system IP available in Corstone-101.</i>	https://www.arm.com/products/silicon-ip-cpu/cortex-m/cortex-m0

Corstone IP

Cortex processor reference packages and supporting system IP. Simplifies silicon design and reduces time to market.

Corstone-500 Preconfigured	<p>Corstone-500 offers a pre-integrated reference package along with an extensive set of System IP, for building Linux-capable high performance System on Chips based on the Cortex-A5 CPU. Corstone-500 includes an FPGA image, out-of-box Linux support and a simulation model, thus accelerating time-to-market and reducing development risk.</p> <p>In comparison to the Corstone-500, the Corstone-500 Preconfigured provides preconfigured instances of CoreSight SoC-400 and CoreLink NIC-400 only (configurable versions are not included).</p>	https://www.arm.com/products/iot/soc/corstone-500
Corstone-102	The Arm Corstone-102 provides a flexible reference package and system IP for small, low cost and energy efficient SoC development. Based on the Arm Cortex-M23 processor, the Corstone-102 is targeted at the constrained market segment for secure IoT applications.	https://www.arm.com/products/iot/soc/corstone-102
Corstone-101	The Arm Corstone-101 contains a reference package based on the Cortex-M3, as well as various other system IP components. It provides all of the fundamental system elements to design a SoC around Arm Cortex-M0/Cortex-M0+/Cortex-M3/Cortex-M4 processors.	https://www.arm.com/products/iot/soc/corstone-101

Artisan Physical IP – Free Library Program

for details of the thousands of Physical IP libraries included in the Artisan Physical IP - Free Library Program see <https://www.arm.com/products/silicon-ip-physical>

	5 nm	7 nm	12 nm	14 nm	22 nm	28 nm	40 nm	45 nm	55 nm	65 nm	80 nm	90 nm	110 nm	130 nm	150 nm	152 nm	160 nm	180 nm	250 nm	
TSMC						•	•		•	•	•	•	•	•	•	•	•	•	•	•
Samsung	•	•		•		•		•		•										
Global Foundries			•	•		•	•	•	•	•		•	•	•					•	•
UMC					•	•	•		•	•	•	•		•	•				•	•
SMIC						•	•			•		•	•	•	•				•	
XMC									•											
SK hynix												•								
Silterra													•	•	•				•	
HHGrace													•	•					•	
DB HiTek													•	•					•	
Vanguard													•						•	•
MagnaChip														•					•	
CSMC														•						
TowerJazz														•					•	
HeJian																	•		•	
1 st Silicon																			•	•
HHNEC																			•	

DesignStart Training

Arm On-Demand training provides access to Armv7-M, Armv8-M, TrustZone for Armv8-M and Armv7-A related modules only. Topics are delivered via over 500 bite sized videos and accompanying knowledge checks.